

# flotex® FR

THE ONLY **IMO CERTIFIED,**  
**WASHABLE,** TEXTILE  
FLOOR COVERING

Flotex Vision FR | Cord orange

## flotex® FR

Flotex FR is a unique, textile flocked floor covering, combining the cleaning properties and durability of a resilient flooring with the comfort, slip resistance and acoustic properties usually associated with textiles.

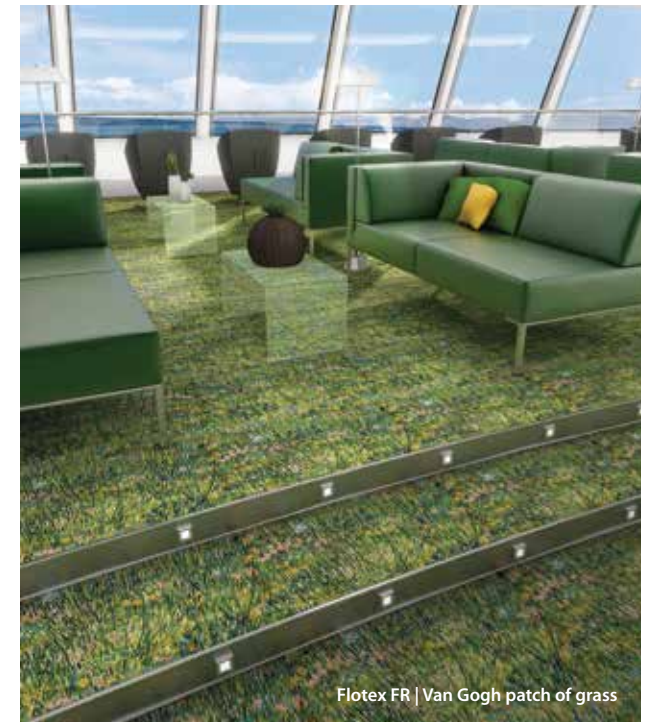
- High definition print offers you complete freedom of design
- Bespoke design service
- Lightweight approximately 1225 gram/m<sup>2</sup>
- Easy to clean
- Impervious backing makes it suitable for wet cleaning
- Excellent acoustic properties up to 22 dB
- Smooth textile velour like surface that is comfortable and warm underfoot
- Slip resistance >0.30
- Durable construction: using Nylon 6.6
- Improved indoor air quality (independently proven by Allergy UK)
- Easy to repair any damaged areas
- Flotex is ortho-phthalate free
- Cut to size/shape option.

Flotex FR is extremely dimensionally stable and has a velour-like surface whilst being functional and extremely easy to clean.

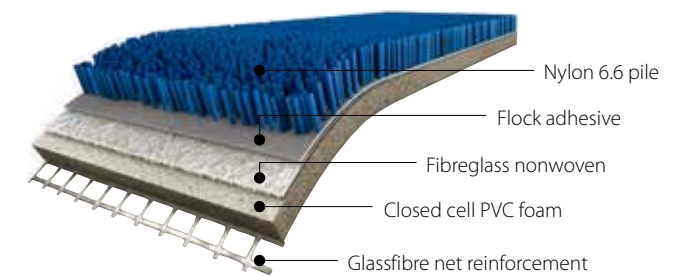
Having been awarded the prestigious Allergy UK™ Seal of Approval, Flotex FR is proven to reduce allergens, improving indoor air quality for passengers.

Flotex FR can be digitally printed. Its high definition quality and specialist printing technology allow for large endless pattern repeats and vivid lifelike colours. This creates a new dimension for Flotex FR and provides ultimate design flexibility for marine environments.

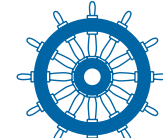
**Where IMO certified material is required, please ensure that 'FR' is clearly noted on all orders.**



### Flotex FR construction



**Flotex FR is IMO tested and approved, and wheelmarked in accordance with the Maritime Equipment Directive (MED).**



1121/13 164.117/1121/WCL MED0364



# FLOTEX FR – CUSTOM DESIGN SERVICE

Create your own masterpiece using our custom design service alongside our high definition printing technology. Our experienced designers can help at any stage in the design process, depending on what involvement you require.

If you are looking for design ideas, re-colouration of existing designs or help with the development of a unique design that works perfectly with your marine interior design scheme, then we have the resource to help. Alternatively, you can choose from over 500 existing references in our Colour, Vision and Designer collections.

## STEPS IN THE CUSTOM DESIGN PROCESS:



# FLOTEX FR OFFERS REAL DESIGN FREEDOM



Flotex FR | bespoke design



# flotex® FR collections

## Flotex Colour FR

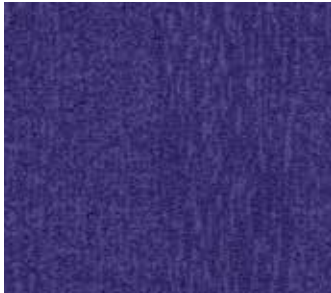
A collection of four semi plain designs. The full colour palette can be viewed on pages 14 and 15.

Metro



Available in 35 colourways

Penang



Available in 21 colourways

Calgary



Available in 22 colourways

Canyon



Available in 12 colourways



## Flotex Vision FR

With over 500 individual items to choose from, plus the option to re-colour several designs, Flotex Vision is best viewed on our digital library ([www.forbo-flooring.com/flotexvision](http://www.forbo-flooring.com/flotexvision)) which is continuously updated. The designs fall into six broad categories of floral, image, lines, naturals, pattern and shape. High definition digital print designs that create superior textures and almost 3D like aesthetics.

Floral



Available in 118 references

Image



Available in 34 references

Lines



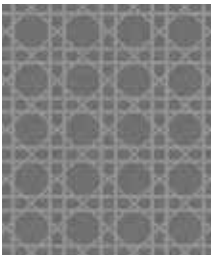
Available in 151 references

Naturals



Available in 57 references

Pattern



Available in 148 references

Shape



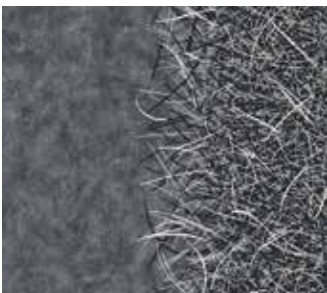
Available in 126 references



## Flotex Designer FR

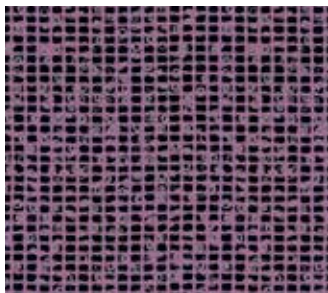
The collection includes designs based on famous designs by Philippe Starck, Tibor Reich, Sottsass and Hemingway.

flotex® by STARCK



Available in 77 references

flotex® tiber



Available in 82 references

flotex® sottsass



Available in 61 references

HEMINGWAYDESIGN X forbo



Available in 4 references



Symbols, lettering and company logos can be easily incorporated.



flotex® colour FR

					
445022   canyon limestone	290019   calgary carbon	290011   calgary quartz	482018   penang bamboo	445025   canyon earth	290017   calgary crystal
					
290012   calgary cement	445023   canyon linen	290026   calgary linen	482075   penang flax	246012   metro sand	482027   penang orchid
					
482007   penang zinc	246005   metro nimbus	246011   metro pebble	290007   calgary suede	290013   calgary caramel	482023   penang dusk
					
246006   metro grey	482005   penang smoke	482017   penang nimbus	246029   metro truffle	290023   calgary espresso	290022   calgary condor
					
482037   penang grey	445021   canyon stone	482004   penang mercury	482015   penang beige	482016   penang coral	246035   metro pink
					
290010   calgary ash	445020   canyon pumice	246002   metro tempest	482020   penang shale	445026   canyon garnet	246034   metro lilac
					
246007   metro ash	482031   penang ash	290002   calgary grey	246014   metro concrete	246009   metro pepper	482024   penang purple
					
482001   penang anthracite	246008   metro anthracite	445019   canyon slate	246010   metro chocolate	246015   metro cocoa	246016   metro grape

					
445024   canyon cloud	290021   calgary aqua	246018   metro mineral	482006   penang sage	445030   canyon sulphur	290006   calgary sahara
					
290001   calgary sky	445029   canyon seafoam	290009   calgary moss	290014   calgary lime	246013   metro amber	290008   calgary saffron
					
246004   metro gull	290004   calgary menthol	246037   metro apple	445027   canyon kelp	246036   metro gold	482019   penang ginger
					
290025   calgary riviera	482011   penang sapphire	246033   metro emerald	246019   metro citrus	290005   calgary melon	246017   metro berry
					
445028   canyon sapphire	246020   metro lagoon	246028   metro jade	246021   metro moss	246025   metro tangerine	246031   metro cherry
					
290015   calgary azure	482026   penang neptune	246024   metro carbon	482010   penang evergreen	290024   calgary fire	246026   metro red
					
246001   metro indigo	482116   penang azure	246032   metro petrol	246022   metro evergreen	246030   metro cinnamon	246027   metro burgundy

**Codes shown are for standard Flotex.**  
**Where IMO certified material is required, please ensure that ‘FR’ is clearly noted on all orders.**



GO ONLINE AND DISCOVER  
OVER 500 DESIGNS FOR YOUR FLOOR

STEP 1

Access: [www.forbo-flooring.com/flotexvision](http://www.forbo-flooring.com/flotexvision)

STEP 2

Choose the design category (e.g. Flotex Vision Floral)



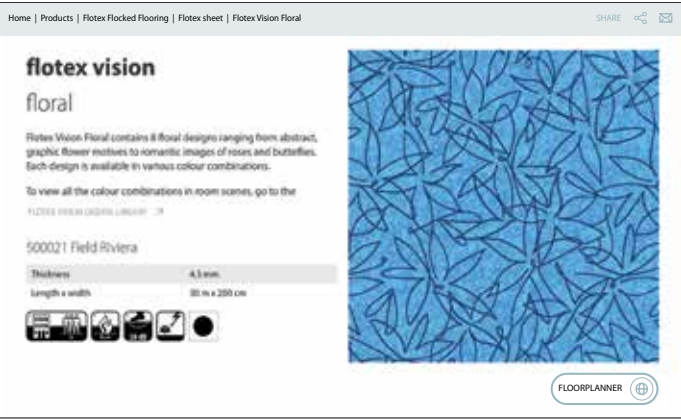
STEP 3

Click on the ‘**product**’ tab to see all the different design and colourway options available in that design category.



STEP 4

Choose the reference that you prefer (e.g. Flotex Vision – 500021 Field Riviera)



STEP 5

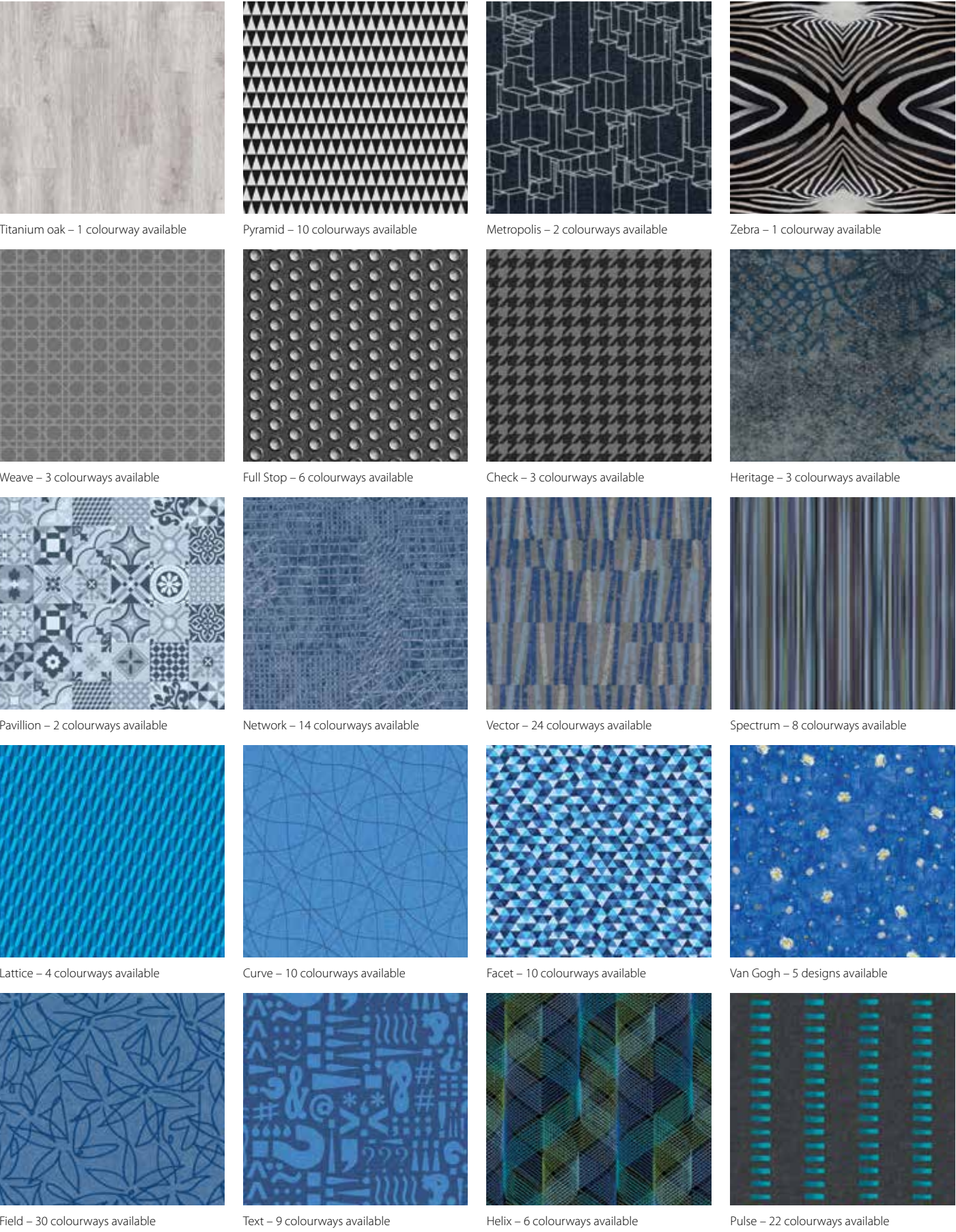
Click on the ‘**Floorplanner**’ link underneath the sample image – Here you can view that reference in a room setting. You can change the room scene and the flooring product/ design/colour in order to get a good feel for how that reference looks in a room setting.



STEP 6

If you see a design that you like but the colourway options don’t work for your project then contact us at [transport@forbo.com](mailto:transport@forbo.com) to enquire if it would be possible to re-colour that particular design. Alternatively you can look to create something completely bespoke.

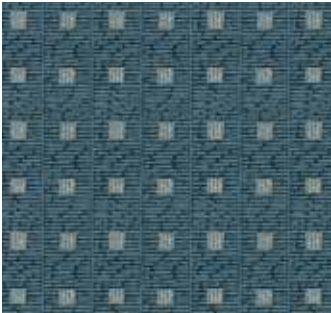
Shown here is only a selection of the total designs available. Most designs are available in numerous different colourway options. Flotex Vision is best viewed on our ‘up-to-date’ digital library: [www.forbo-flooring.com/flotexvision](http://www.forbo-flooring.com/flotexvision)





# flotex® vision FR

Shown here is only a selection of the total designs available. Most designs are available in numerous different colourway options. Flotex Vision is best viewed on our 'up-to-date' digital library: [www.forbo-flooring.com/flotexvision](http://www.forbo-flooring.com/flotexvision)



Grid – 12 colourways available



Collage – 10 colourways available



Silhouette – 12 colourways available



Contour – 14 colourways available



Flagstone – 1 colourway available



Botanical – 6 colourways available



Journeys – 17 colourways available



Star – 4 colourways available



Pebbles – 1 colourway available



Etch – 12 colourways available



Plaid – 18 colourways available



Wonderlab – 4 colourways available



Matrix – 8 colourways available



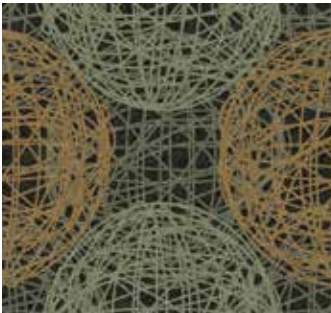
Farmhouse tile – 1 colourway available



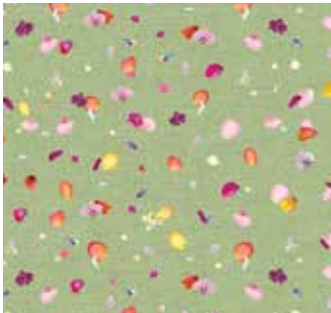
Ecosystems – 3 colourways available



Linear elm – 1 colourway available



Globe – 10 colourways available



Floret – 6 colourways available



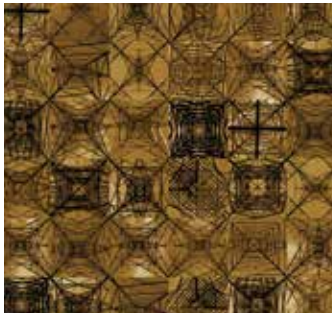
Van Gogh – 5 designs available



Grass – 1 colourway available



Orbit – 12 colourways available



Tension – 8 colourways available



Reclaimed oak – 1 colourway available



Ring Pull – 8 colourways available



Cord – 34 colourways available



Groove – 9 colourways available



Autumn – 12 colourways available



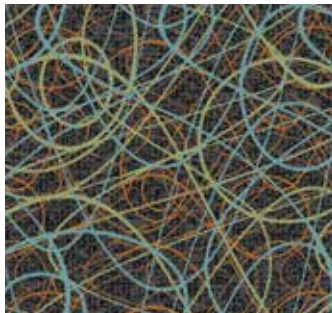
Van Gogh – 5 designs available



Mosaic – 5 colourways available



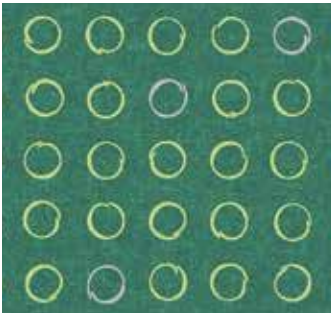
Chevron – 6 colourways available



Signature – 6 colourways available



Transit – 8 colourways available



Spin – 36 colourways available



Swirl – 9 colourways available



Van Gogh – 5 designs available



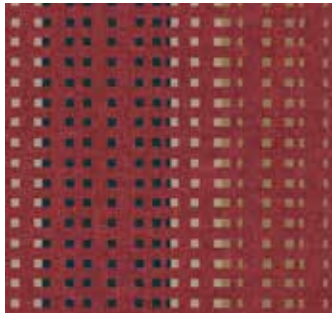
Firework – 14 colourways available



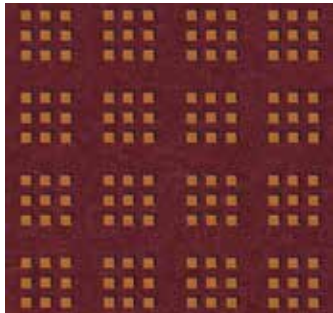
Blossom – 10 colourways available



Tangent – 8 colourways available



Trace – 22 colourways available



Cube – 16 colourways available

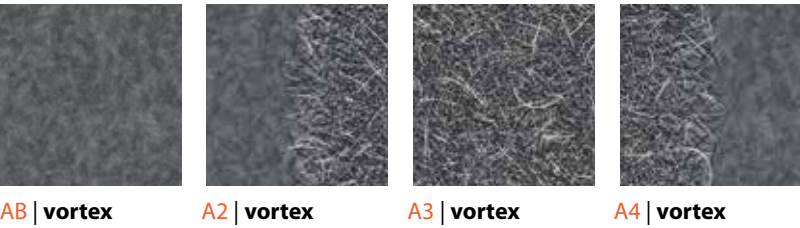


# flotex® designer FR

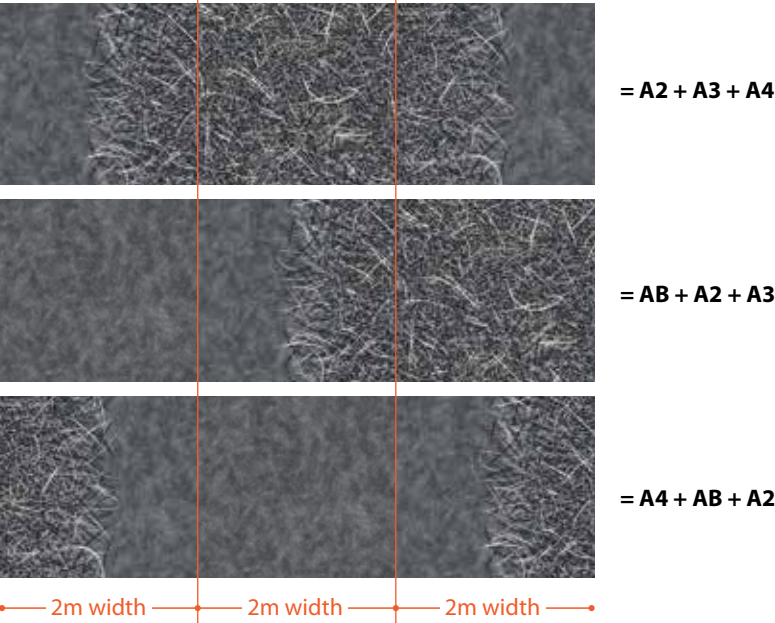
flotex®  
BY STARCK®

## The 3 systems

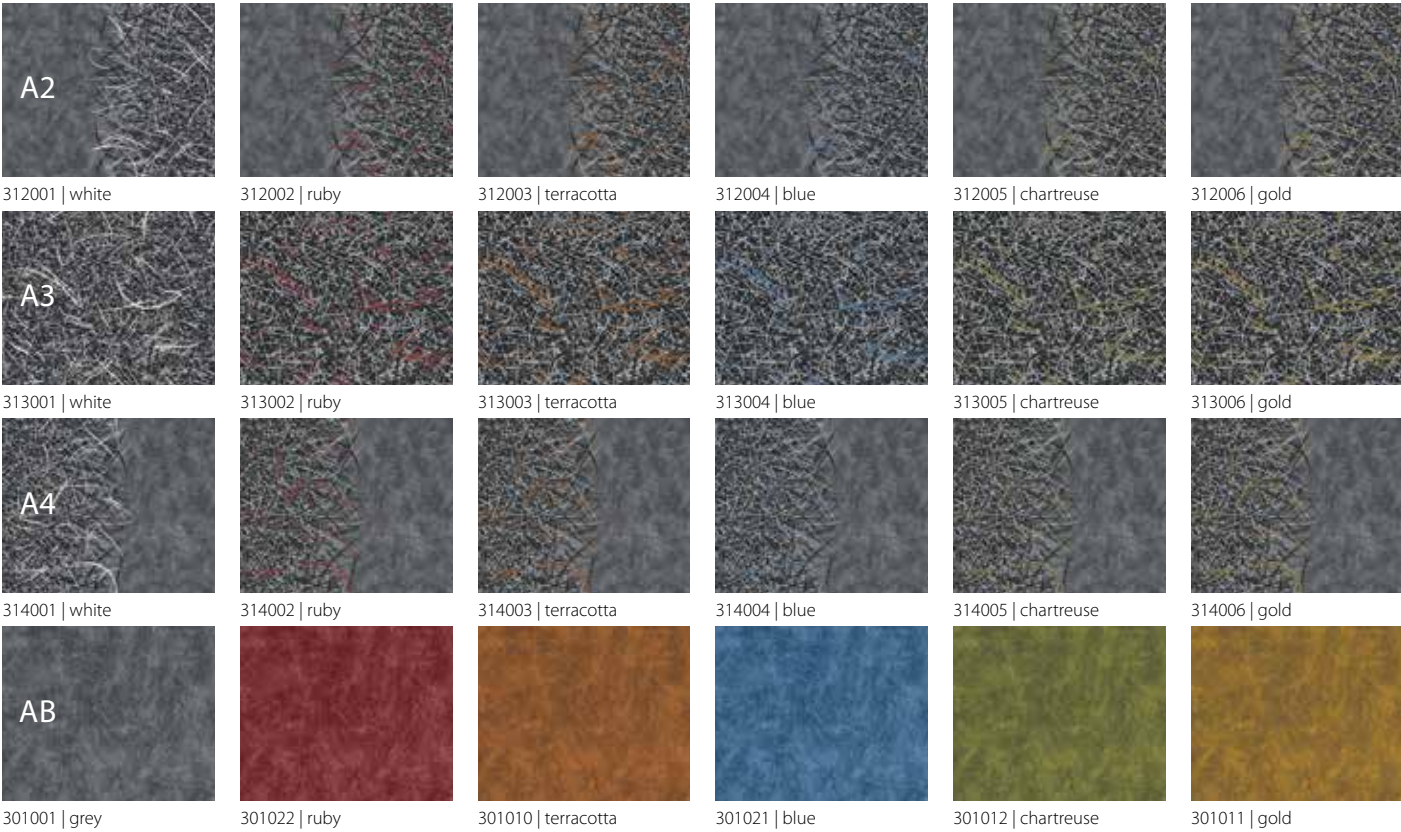
Philippe Starck created a collection of 3 systems, named Artist, Twilight and Vortex. Each of them comes in four separate parts that can be freely associated to create patterns for your project that adapts to your needs and preferences.



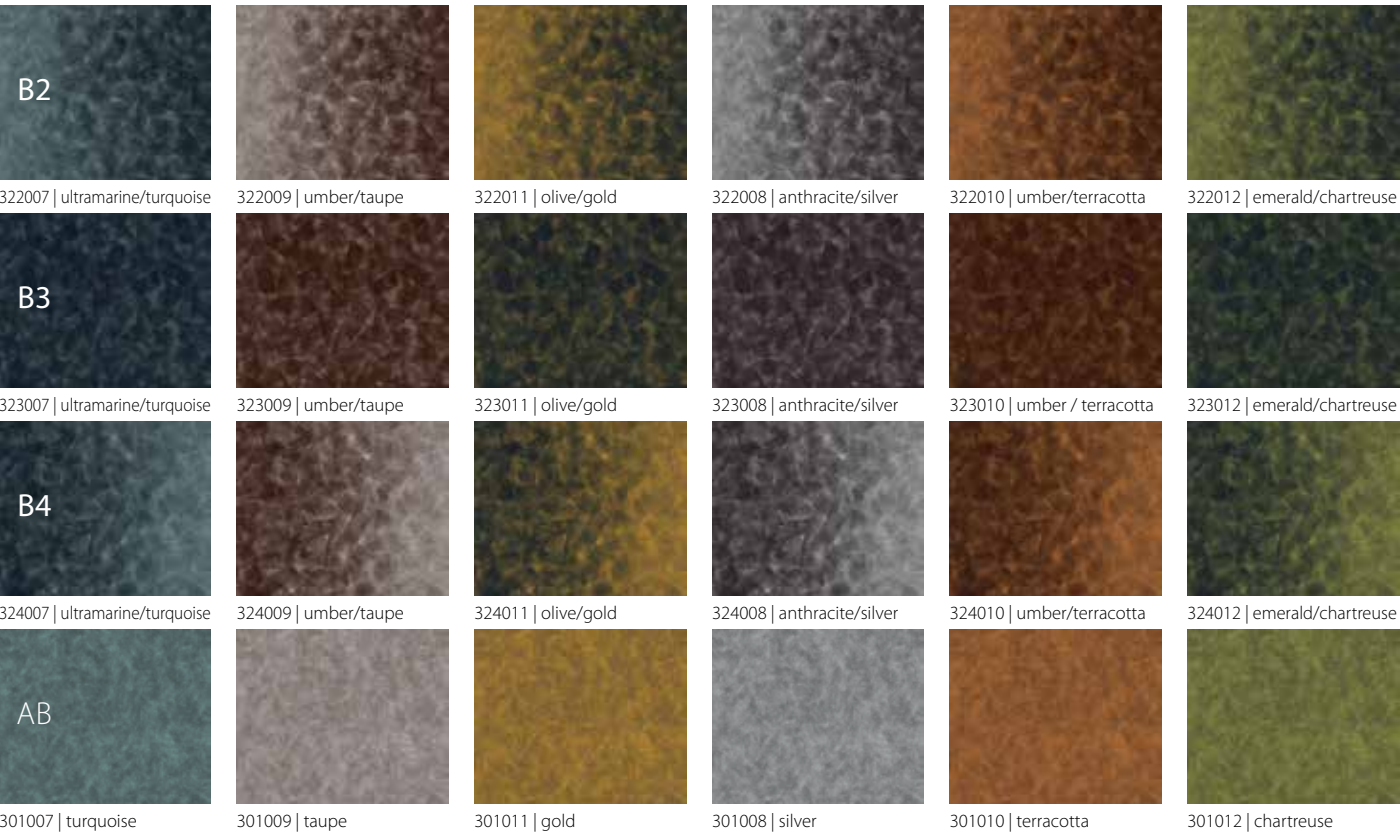
Inspiration with 3 sheets (6 metres width):



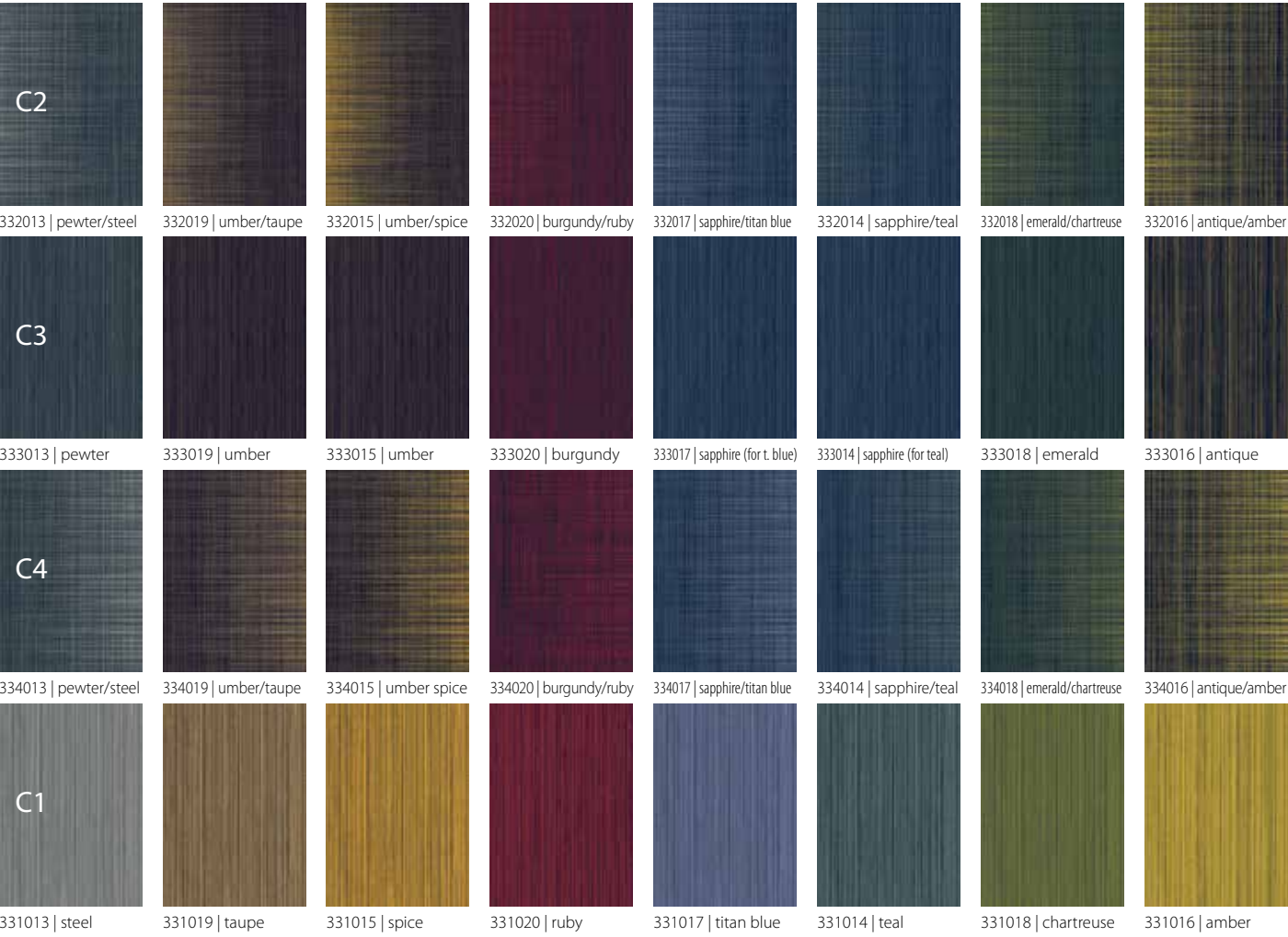
## Vortex



## Artist



## Twilight



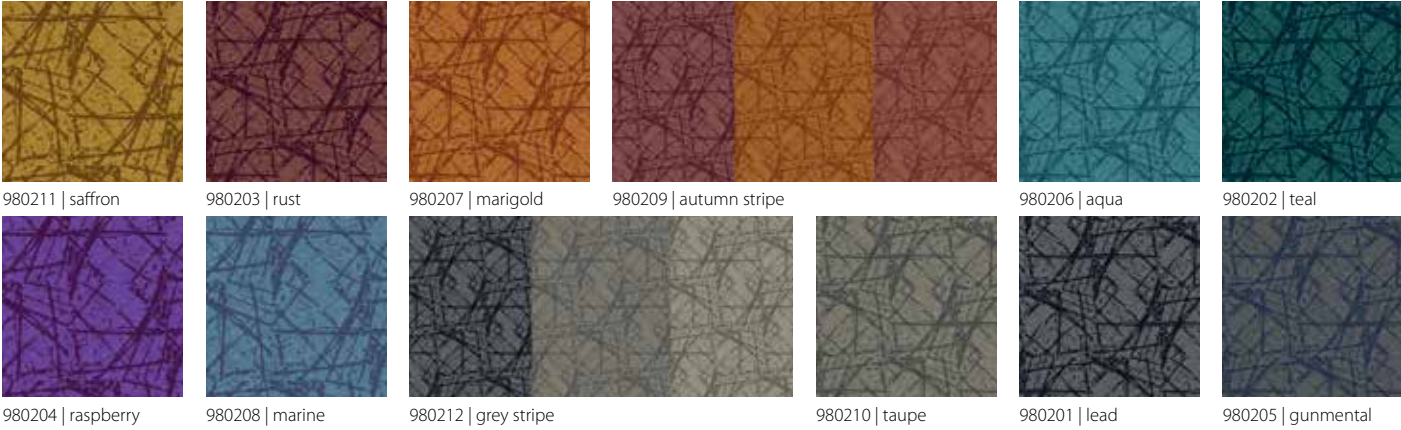
Codes shown are for standard Flotex. Where IMO certified material is required, please ensure that 'FR' is clearly noted on all orders.



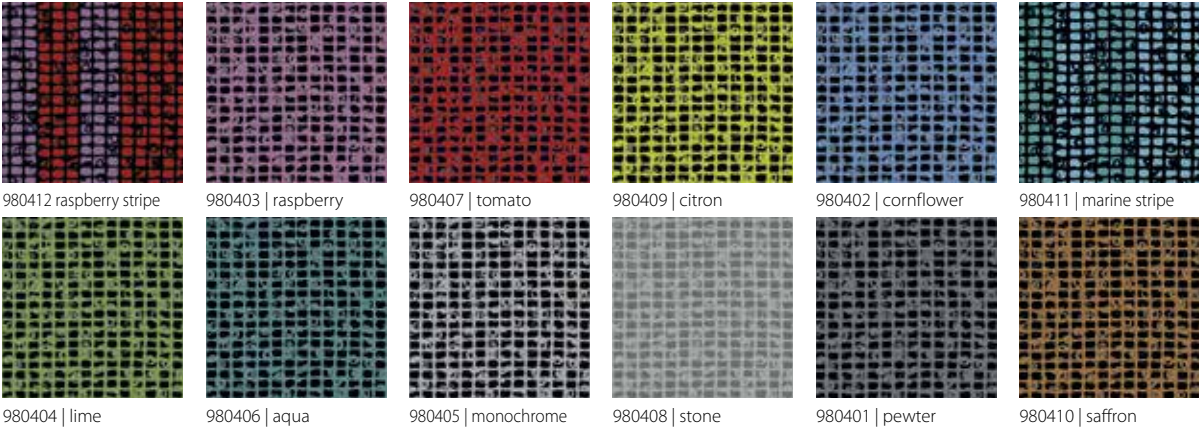
# flotex® designer FR

# flotex® tibor

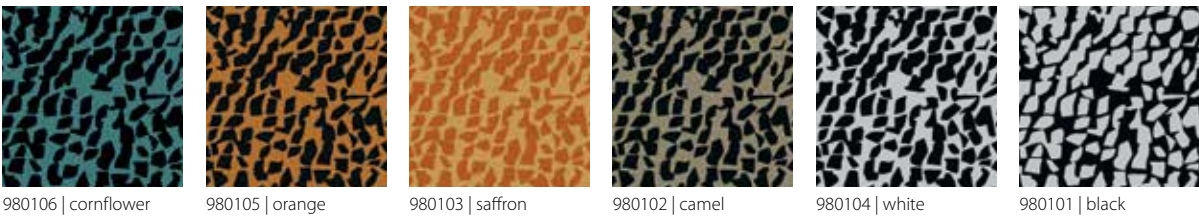
## Ziggurat



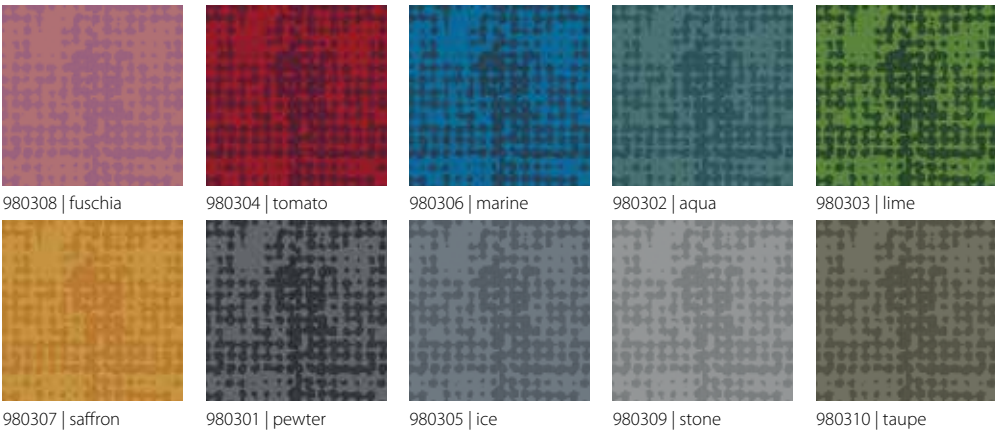
## Mosaic



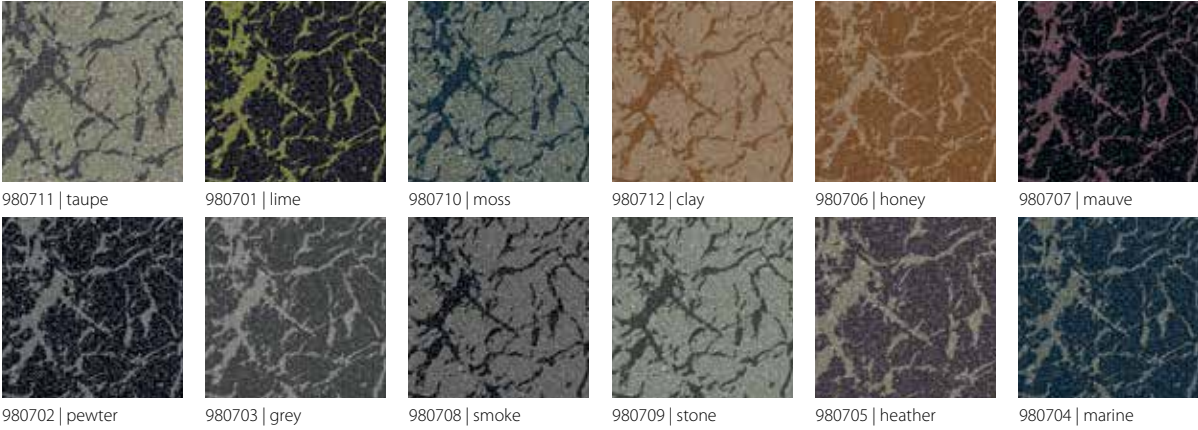
## Quartz



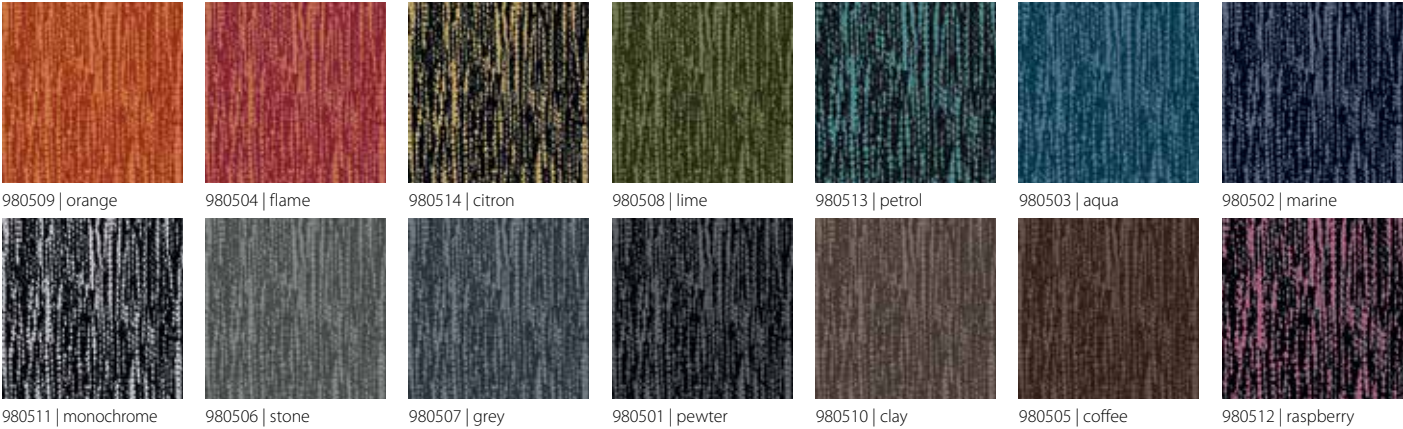
## Tessello



## Onyx



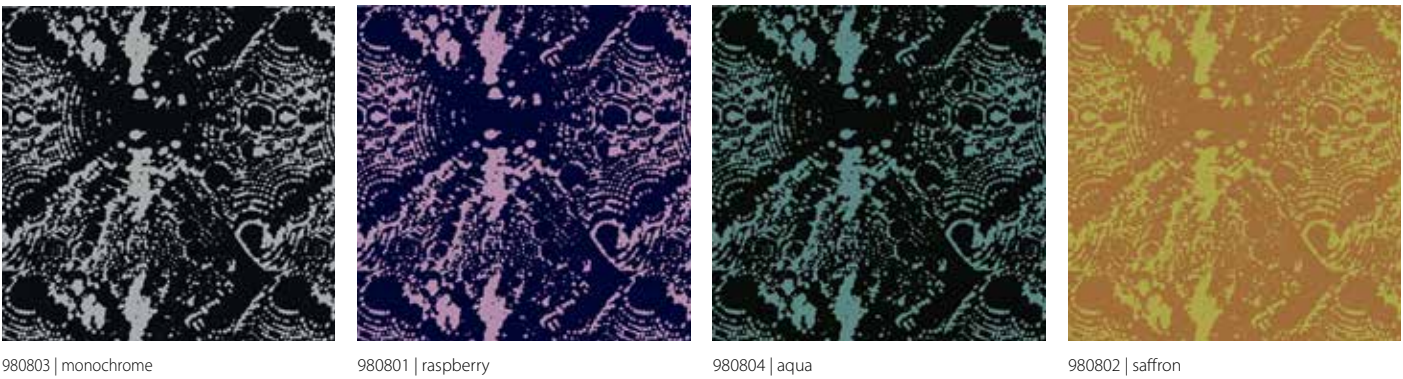
## Tweedy



## Arbor



## Atomic



Codes shown are for standard Flotex. Where IMO certified material is required, please ensure that ‘FR’ is clearly noted on all orders.



# flotex® designer FR

## flotex® sottsass

### Bacteria



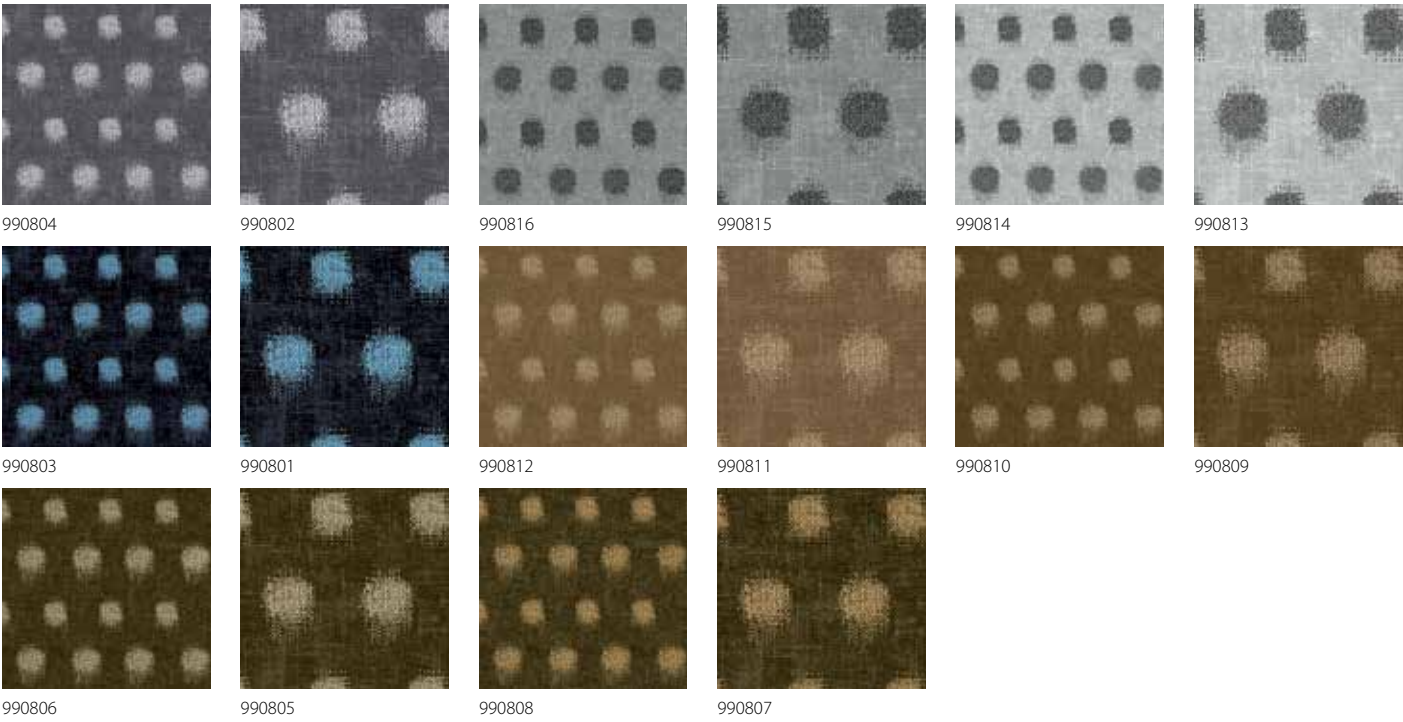
### Terrazzo



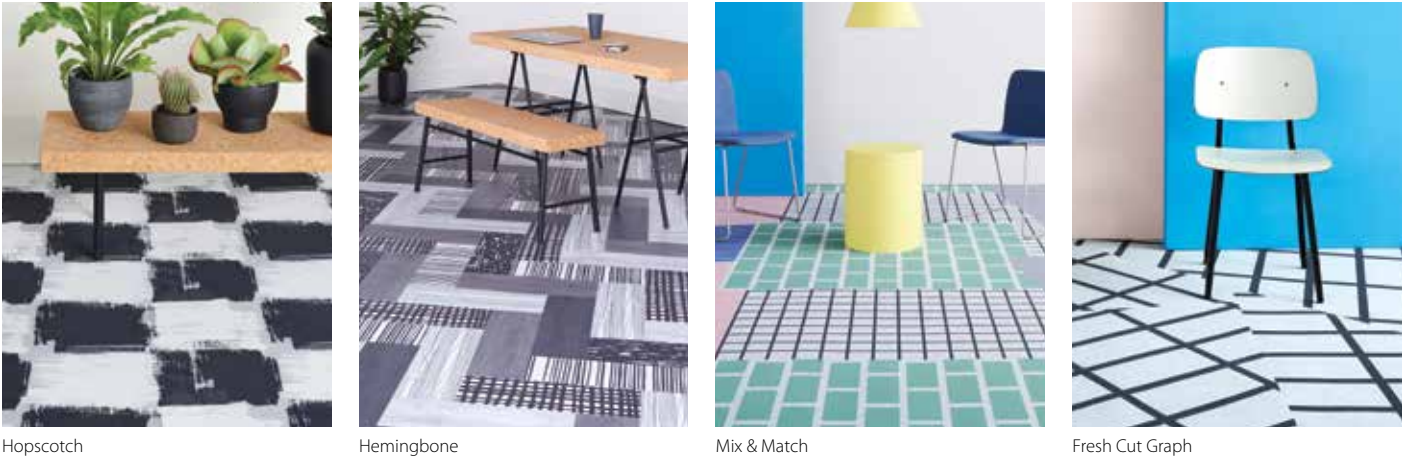
### Wool



### Kasuri



HEMINGWAYDESIGN X **forbo**  
FLOORING SYSTEMS



Codes shown are for standard Flotex. Where IMO certified material is required, please ensure that ‘FR’ is clearly noted on all orders.

















Flotex Vision FR | Wonderlab chameleon

TECHNICAL SPECIFICATIONS – **FLOTEX FR**

Technical specifications

Flotex FR meets the requirements of EN 1307

	Total thickness	ISO 1765	Approx. 3.3 mm
	Wear classification	EN 1307	Class 33
	Roll width		200 cm
	Roll length		30 m
	Suitability for castor chairs	EN 985	Castor chair continuous use
Colour fastness ratings:			
	Light	EN ISO 105/B02	6
	Rubbing	EN ISO 105/X12	≥ 4
	Water	EN ISO 105/E01	≥ 4
	Pile material		100% polyamide
	Construction		Flocked textile floor covering
	Backing		Resilient waterproof backing
	Total weight	ISO 8543	Approx. 1225 gram/m²
	Pile thickness	ISO 1766	Approx. 2 mm
	Impact noise reduction	EN ISO 717-2	Δ Lw = approx. 22 dB
	Dimensional stability	ISO 2551	≤ 0.20%
	Flexibility	ISO 24344	No cracking (10 mm diameter Mandrel)
	Electrical resistance	ISO 10965	Approx. >10⁹Ω
	Comfort class	EN 1307	LC1

Flotex FR product meets the demands set by EN 14041

	Slip resistance	EN 13893	> 0.30
	Body voltage	ISO 6356	< 2.0 kV

Fire rating:\*

IMO Resolution A653(16)	Pass
IMO Resolution MSC 307(88) Annex 1 Parts 2 and 5	Pass
US Coast Guard approval ref: 164.117/1121/WCL	MED0364

Flotex FR is made to order.

\*IMO tested and approved using 3mm steel subfloor and IMO certified Eurocol 640, acrylic dispersion adhesive.

Final production might vary within commercial tolerances from sample. Manufacturing specifications subject to normal industry tolerances. Forbo reserves the right to improve the specification of its products without giving prior notice. Errors and omissions excepted.



Where IMO certified material is required, please ensure that ‘FR’ is clearly noted on all orders.